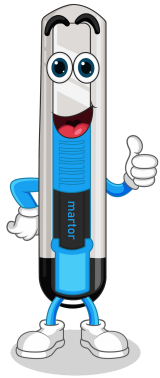


TOOLBOX TALK

KNIFE SAFETY IN THE WORKPLACE

FIVE STEPS TO SAFE CUTTING

Everyone knows that wherever cutting takes place, injuries can occur. Cutting tools are an unavoidable part of the workplace, but you can prevent knife-related injuries with the proper safety features, training, and maintenance.



1. IDENTIFY AND REMOVE UNSAFE KNIVES

A knife is classified as unsafe if it features any of the following:

- manual retraction
- exposed blade
- boot knives
- dull or blunt blades
- kitchen knives
- pocket knives
- folding knives
- snap off blades

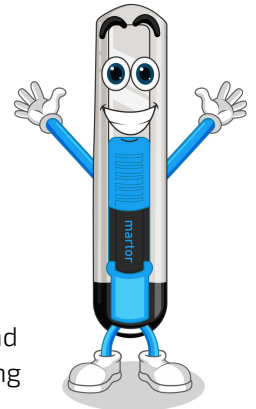


2. WHAT IS A 'SAFE' KNIFE?

A knife is classified as a safe knife when it features any of the following:

- concealed blade
- fully automatic retraction
- automatic blade retraction

These types of 'safe' knives can also feature a safe blade change system and blade locking function and an ergonomic, lightweight handle to reduce handling fatigue.



SAFETY KNIVES LEVELS EXPLAINED

a.

The blade is not open but concealed, and therefore the cutting edge is shielded from you and the packaged goods. Giving you a maximum degree of safety from cut injuries whilst cleverly protecting your goods.

b.

The intelligent cutting tool: as soon as the blade leaves the material being cut, it withdraws automatically into the handle. Even when you keep on pressing the slider or the handle. That's what we call "a very high degree of safety".

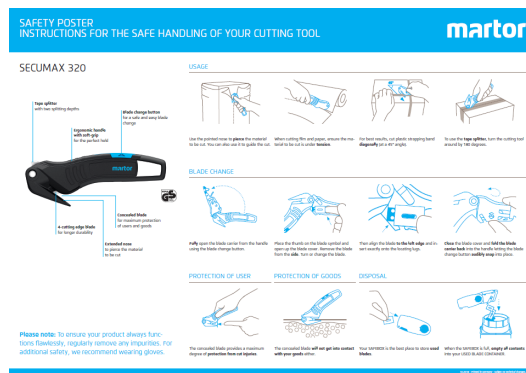
c.

Thumbs up for a high degree of safety. As soon as you start cutting, remove your thumb from the slider and the blade will disappear into the handle the moment it loses contact with the material being cut.

3. SAFE CUTTING PRACTICES

To work safely with knives its important to:

- ensure blades are sharp and not broken
- use in conjunction with PPE (i.e., gloves)
- maintain and clean knives regularly
- dispose of blades safely
- select and use the right knife for the job
- read/watch training materials
- keep a safe and clean work area
- store knives safely after use
- only use a knife for its intended purpose



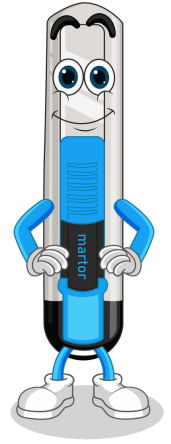
TOOLBOX TALK



4. SAFE BLADE DISPOSAL

To ensure safe disposal of used blades:

- dispose of blades in a secure container
- use a knife with a safe blade change system
- never dispose of blades directly into the bin
- do not leave blades on the bench or unattended
- dispose of the used blade container responsibly
- appoint an employee to be in charge of blade change



5. SAFE KNIFE STORAGE

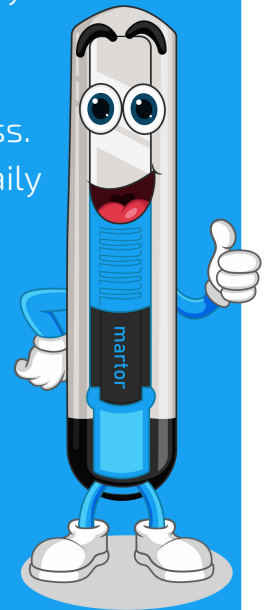
Knife safety doesn't end when the knife is not being used:

- do not store knives in your pocket
- do not leave knives out on benches or shelves
- do not leave knives where the public can access them
- use a knife holster to hold knife and spare blades
- use a locked cabinet to keep knives/blades not being used
- appoint an employee to be in charge of knife/blade storage



KEY TAKEAWAYS

- The safest knives for the workplace feature either a concealed blade, fully automatic and automatic retraction.
- Increase your safety when using knives by using appropriate PPE.
- A dull blade is an unsafe blade. Regularly check your blades for sharpness.
- Regular maintenance of knives is required. Clean and inspect the knife daily for dust and dirt.
- Utilise training materials provided with the knife to ensure the knife is being used and maintained correctly.
- Safely dispose of blades in an approved used blade container.
- Practice safe cutting techniques provided in training materials.
- Store knives safely in a holster or a locked cabinet when not in use.
- Be aware, focused, and alert when using knives in the workplace and around others.



HOW CAN YOU IMPROVE KNIFE SAFETY IN OUR WORKPLACE?

What was the most important thing you learned during today's toolbox talk?

What is one thing that you/we can improve concerning knife safety in our workplace?
