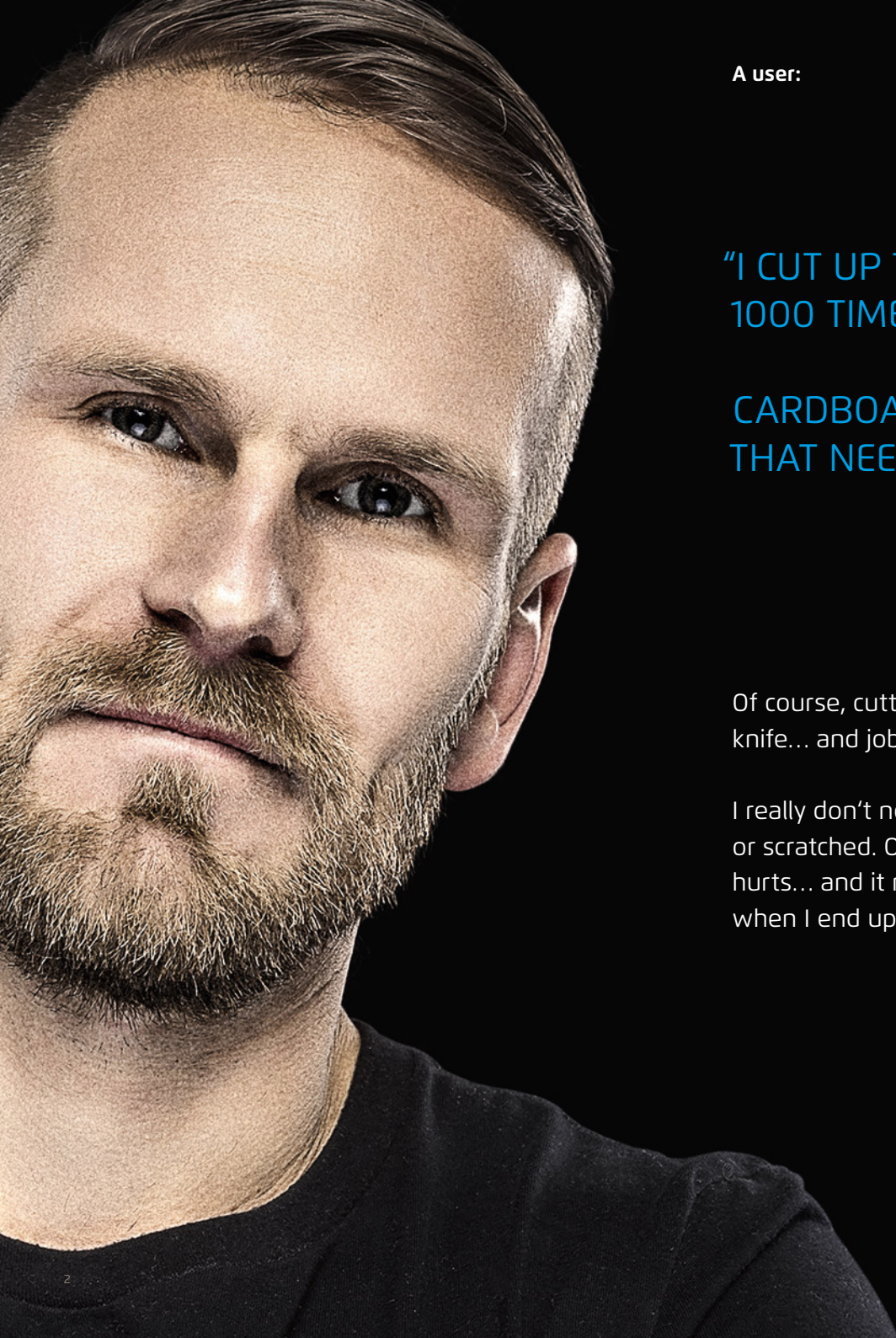


A KNIFE IS FOR CUTTING.  
WHY SHOULDN'T IT ALSO  
BE SAFE?



ENJOY SAFETY  
MADE IN SOLINGEN

**martor**



A user:

"I CUT UP TO  
1000 TIMES A DAY.

CARDBOARD, FILM... ANYTHING  
THAT NEEDS CUTTING.

Of course, cutting needs to be quick. Apply the  
knife... and job done!

I really don't need the goods getting marked  
or scratched. Or getting myself cut. It really  
hurts... and it really hurts my employer too  
when I end up being off work for a few days."

A safety officer:

“WORKPLACE INJURIES  
CAUSED BY CUTTING?”

I’VE PLENTY OF NASTY  
STORIES TO TELL ON THIS  
TOPIC...

But there is something you can use to protect  
against such injuries: knives with integrated  
safety features.

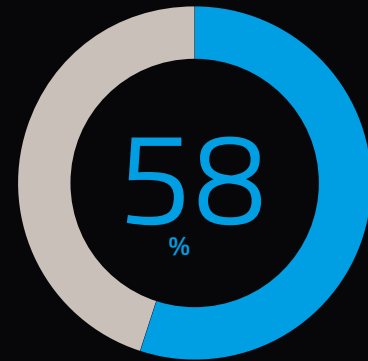
My job is to bring awareness about safety  
knives to users who are usually familiar only  
with their standard cutters. I provide manage-  
ment with some of the statistics, which make  
things absolutely clear...!”



## Facts and figures



This is the number of knife-based “reportable workplace accidents” that occurred in Germany in 2019 (Source: German Social Accident Insurance, 2020).



More than half of all workplace accidents involving manual tools were caused by knives.



Each knife-based workplace accident results in up to 7.4 days off work (Source: German Accident Insurance and Prevention in the Food and Catering Industry, 2016).



Every workday lost costs employers around 500 euros on average.



An employer:

“THE WELL-BEING OF MY STAFF  
IS IMPORTANT.

BUT I HAD NEVER GIVEN ANY  
THOUGHT TO HAVING SAFER  
KNIVES...

By avoiding just one accident, we all gain. But  
which knife is the right one?

It needs to match the materials to be cut –  
and it needs to match the user. It also should  
be robust and durable. So who can help us find  
the right knife?”

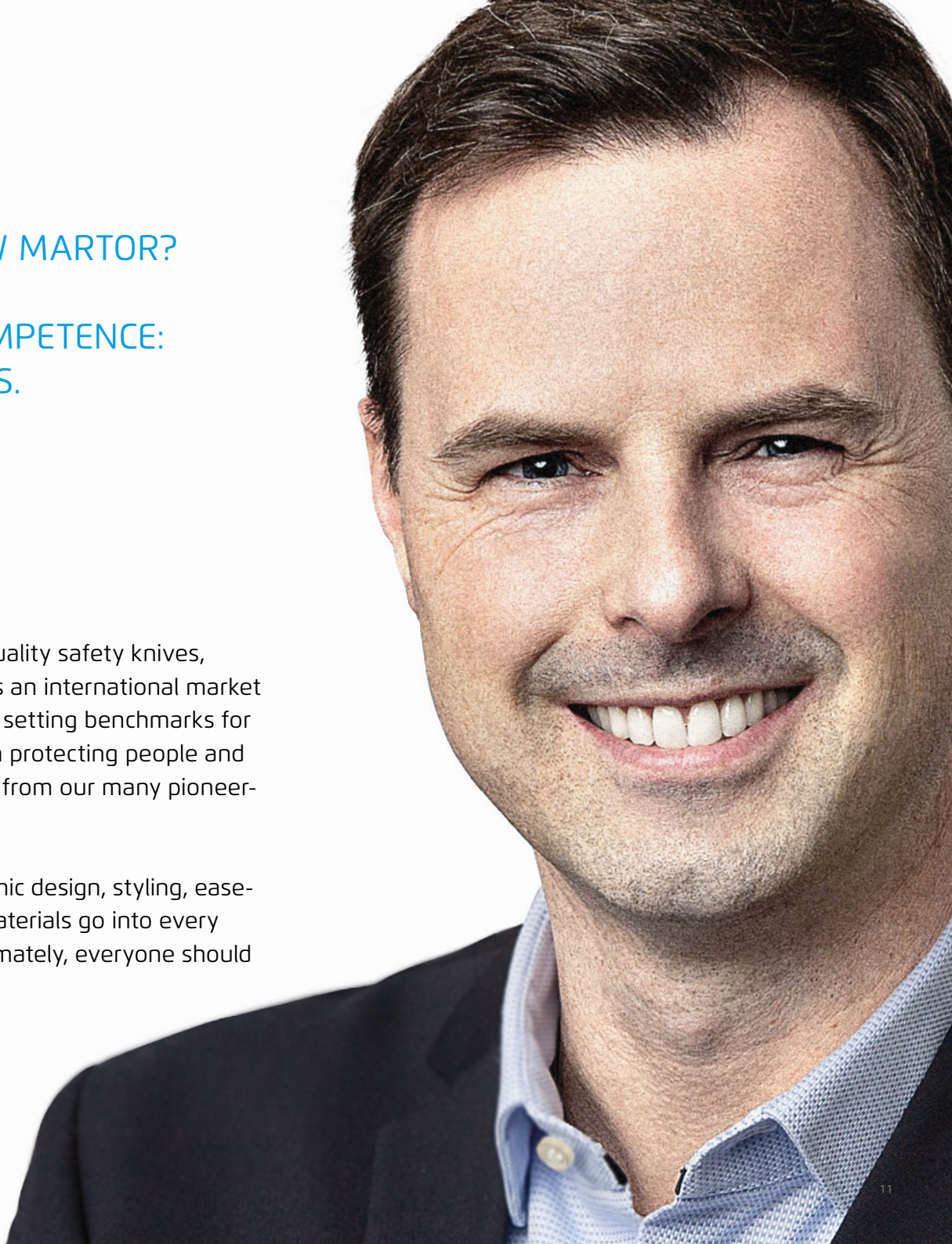
**MARTOR CEO:**

**“DO YOU KNOW MARTOR?”**

**OUR CORE COMPETENCE:  
SAFETY KNIVES.**

And these are high-quality safety knives, “Made in Solingen”. As an international market leader, we have been setting benchmarks for more than 40 years in protecting people and goods. This is evident from our many pioneering patents.

Furthermore, ergonomic design, styling, ease-of-use and durable materials go into every MARTOR product. Ultimately, everyone should like using them.”



**MARTOR technical consultant:**

“WHICH SAFETY KNIFE BEST  
SUITS YOUR PURPOSES?

I ADVISE YOU ON WHAT YOU  
NEED.

Which material is to be cut, by whom and under what conditions? When I get the answers to these questions, I can recommend a choice of MARTOR knives.

Tests and training courses support initial usage of the new cutting tools. This means satisfaction all round!”

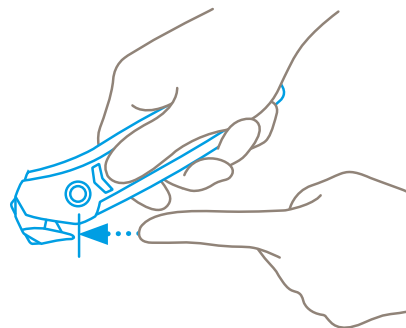




### SECUMAX

**Concealed blade =  
Maximum safety**

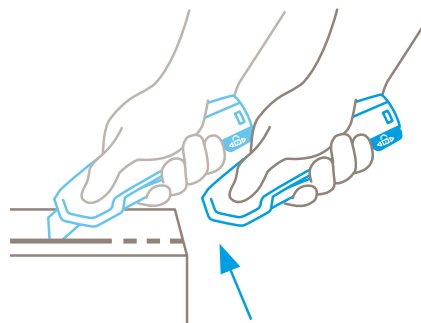
The blade is not open rather concealed, shielded from both people and goods alike. Giving you a maximum degree of safety from cut injuries whilst cleverly protecting your goods.



### SECUPRO

**Fully automatic blade retraction =  
Very high safety**

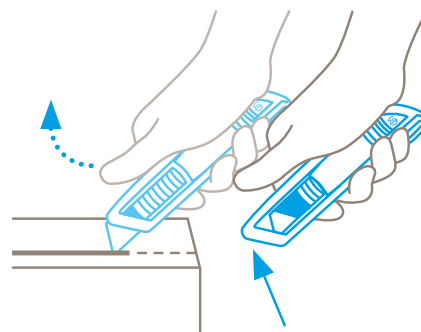
The intelligent cutting tool: as soon as the blade leaves the cutting material, it withdraws automatically into the handle - without you having to do anything. That's what we call "a very high degree of safety".



### SECUNORM

**Automatic blade retraction =  
High safety**

Thumbs up for a high degree of safety. As soon as you start cutting, remove your thumb from the slider and the blade will disappear into the handle the moment it loses contact with the material being cut.





## MARTOR product examples



### SECUMAX

Concealed blade =  
Maximum safety



SECUMAX 350



SECUMAX 320



### SECUPRO

Fully automatic blade retraction =  
Very high safety



SECUPRO 625



SECUPRO MARTEGO



### SECUNORM

Automatic blade retraction =  
High safety



SECUNORM 500



SECUNORM 175



## Further benefits from MARTOR



### Practical accessories

Accessories also contribute to active workplace safety: such as holsters for safe transport and robust containers for blade disposal.

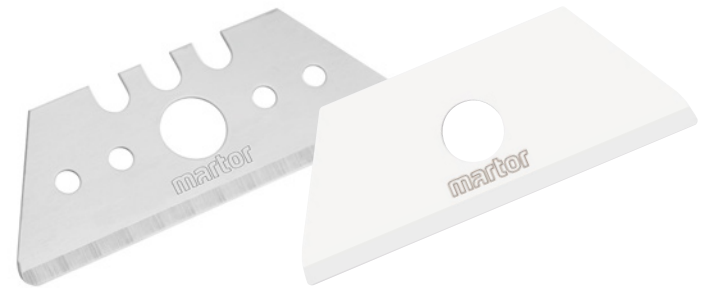
---



www.tuv.com  
ID 2811007400

### GS-certified products

We carry out tough testing – and subject ourselves to tough testing. The GS symbol stands for approved safety.



### High-quality blades

Our high quality blades are sharp, have long service lives and often rounded tips as an added safety feature.

---



GERMAN  
DESIGN  
AWARD  
WINNER  
2020



reddot winner 2021

### Award-winning designs

Form and function in unison. That's why our knives have received the German Design Award, the iF-Award, the pro-K award and the red dot design award.

# "HOW DO WE GET IN CONTACT?"

Preferably personally. We will therefore be delighted to receive your call under **+49 212 73870-0** or by email to **info@martor.de**

You will find further information on our website: [www.martor.com](http://www.martor.com)

MARTOR KG | Lindgesfeld 28 | 42653 Solingen | Germany  
T +49 212 73870-0 | F +49 212 73870-90  
[info@martor.de](mailto:info@martor.de) | [www.martor.com](http://www.martor.com)