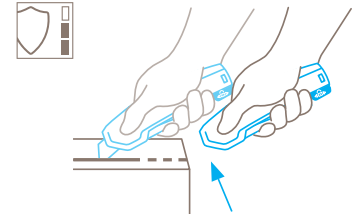


## TECHNICAL DATA SHEET

### SECUPRO 425 NO. 425001

#### Safety technology



#### Fully automatic blade retraction – a very high degree of safety

The fully automatic blade retraction of the SECUPRO 425 guarantees a very high degree of safety from cut injuries. The blade withdraws into the handle immediately after leaving the material being cut. Even when the lever is still being squeezed.



PLASTIC SQUEEZE-LEVER KNIFE WITH LARGER CUTTING DEPTH AND FULLY AUTOMATIC BLADE RETRACTION.

Order No. 425001.02

#### A lightweight with outstanding performance.

Want to work quickly and safely? The lightweight SECUPRO 425 is designed to deliver exactly that. The safety knife fits perfectly in your hand, helping you work efficiently. With the squeeze-grip made from recycled plastic (at least 60%), you can effortlessly cut a wide variety of materials, e.g., up to 3-ply corrugated cardboard and plastic strapping. You can also relax thanks to the fully automatic blade retraction. It reliably protects you from cutting injuries.

#### Outstanding ergonomics

The SECUPRO 425 could become your new favourite tool. The handle and lever are designed to reduce hand strain, regardless of hand size and duration of use. You can then quickly complete your tasks without tiring.

#### Sustainable and long-lasting

The handle housing is made from 60% recycled plastic and reinforced with glass fibre. This allows the SECUPRO 425 to

combine lightness with robustness and versatility, the basis for high performance cutting in day-to-day work.

#### Large cutting depth

The long blade extension is ideal for up to 3-ply cardboard. The safety knife is also ideal for cutting tasks in warehousing and logistics as well as, for example, in maintenance.

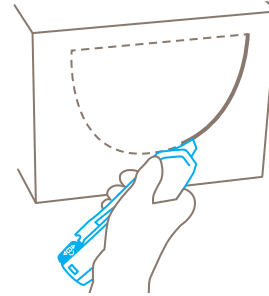
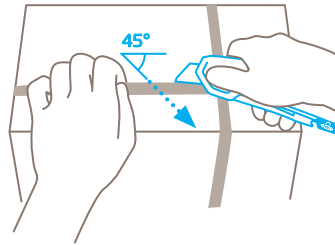
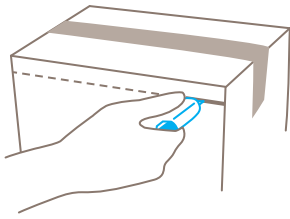
#### 2-cutting edge blade

Before replacing the high-quality blade, it can be turned. This doubles the blade's service life and reduces the effort required. Your product will then cut like new again.

#### End-to-end safety

At the front, you can rely on blade retraction, while at the rear there is a safety lock. This allows you to lock the lever and prevent unintentional release of the blade.

## USAGE



## PRODUCT FEATURES

### Technical features



Very high safety



Tool-less blade change



Abrasion resistant



Very ergonomic



Safety lock



2-cutting edge blade



Cutting depth



Rounded-tip trapezoid blade



For right and left handers



Lanyard hole



Printable for promotional purposes

### Main cutting materials



Cardboard: up to 3-ply



Plastic strapping band



Leather



PVC



Carpet



Textile, material



Wrapping, stretch and shrink foil



Layers of foil or paper

### Installed blade



**NO. 60099**

0.63 mm, rounded blade tips, deep-edged

### Optional blade



**NO. 160099**

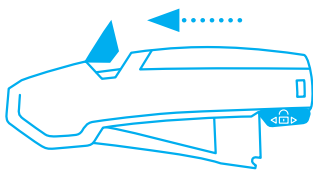
0.63 mm, rounded blade tips, deep-edged, stainless



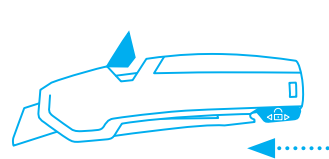
**NO. 60095**

0.63 mm, rounded blade tips, deep-edged

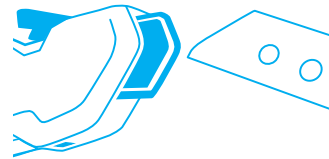
## BLADE CHANGE



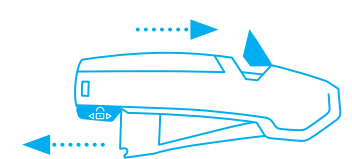
Pull the **blade change button** to the top and release the lever. Blade and blade holder will come out of the handle.



Secure the lever with the safety device and turn the handle so that the **transparent blade cover is facing upwards**.



Now **reverse or change** the blade. Make sure that the blade is exactly positioned on the cams on the blade holder.



Slide the lock to the rear position, so that the **lever can be released** again. **Then** push the blade change button back into the handle and continue cutting.

## SERVICES OFFERED



Safety poster



Training video



Technical data sheet



Consulting service

## PRODUCT AND PACKAGING DETAILS

<b>Order No.</b>	NO. 425001.02	<b>Packaging unit</b>	1 in single unit box
<b>Knife size (L x W x H)</b>	154 x 22 x 59 mm	<b>Size Single unit box</b>	157 x 25 x 63 mm
<b>Weight knife</b>	84.0 g	<b>Weight single unit box</b>	101.0 g
<b>Basic material</b>	Recycled plastic, glass fibre reinforced	<b>EAN Code single unit box</b>	4002632805264
<b>Cutting depth</b>	21 mm	<b>Quantity in outer pack</b>	10 knives
		<b>Size outer pack</b>	131 x 129 x 162 mm
		<b>Weight outer pack</b>	1100.0 g
		<b>EAN Code outer pack</b>	4002632855269
		<b>Customs tariff number</b>	82119300

## SAFETY CERTIFICATE

<b>Date of issue</b>	01.04.2026
<b>Certification</b>	GS certificate NO. 191774-8342-55094-2026

## Certificates and awards



## SAFETY ADVICE

To ensure that you use your new MARTOR knife safely and most effectively, please read and note the following user-instructions. Please keep the written guide in a safe place so that you can access it at any time.

**1. General application instructions:** Please always use the product carefully for manual cutting work only and not for any purposes other than those that are intended. Please take the correct handling and the proper use of the knives into account in this regard. As an additional safety measure, we recommend the wearing of safe gloves.

**2. Special application instructions to avoid the danger of injuries:** Always take great care when handling the product. Before first use, familiarise yourself with the safety technology and how it works. Before every further use, check the knife for proper functioning. Only use cutting tools that are in perfect condition with sharp, clean and undamaged MARTOR blades. Also make sure that the knife's operation is not impaired by the material to be cut or by dirt or particle deposits around the blade. **CAUTION: The blade is sharp and can result in serious and deep cuts. Therefore, never reach into the blade!** Do not place your free hand in the line of cutting and never cut directly towards you.

**3. Replacement of spare parts:** Replace any blades that become dull at the right time! Use only the replacement blades from MARTOR for this purpose. Dispose of old blades in a proper fashion. They should not be placed in a waste paper bin, as this poses a considerable danger of injuries. Never perform any repairs yourself. If the knife shows signs of aging or any other wear, e.g. which impair safety features, blade changing or usage, the knife must be taken out of service and replaced. Do not modify this product in any way. Modifications of any kind may impair product safety. **CAUTION: The risk of injury caused by manipulation of this product is extremely high.**

**4. Non-use of the knife:** Always secure the blade in such a way (depending on product type) that injuries due to cuts are excluded. Store the knife in a secure place.

**5. Care instructions:** To guarantee a long service life, always keep the knife clean and do not expose it to unnecessary soiling and humidity.

**CAUTION: No liability will be assumed for consequential losses. Subject to technical changes and errors! This knife does not belong in the hands of children!**

## ACCESSORIES

---

### BELT HOLSTER L

NO. 9922



What do you do with your cutting tools when you are not actually using them? The MARTOR BELT HOLSTER L is a robust holder that allows you to carry all large MARTOR knives as well as our safety scissors at all times. In addition, the interior and exterior pockets are designed to allow you to load different tools: for example you can carry an extra safety knife, a pen and a pack of blades. The MARTOR BELT HOLSTER is the ideal place to stow your tools safely when moving from A to B – and have them at hand, as soon as they are required.

### BELT HOLSTER XXL

NO. 9924



The BELT HOLSTER XXL is a real space miracle. With it, you not only transport your MARTOR cutting tools safely from A to B. All other work utensils are always within reach. The BELT HOLSTER XXL has two large compartments: the inner one is lockable, the outer one is equipped with a knife safety device. You are also well equipped when it comes to carrying options. Choose flexibly between strap, Velcro fastener and clip.

### TOOL RETRACTOR

NO. 9960



The TOOL RETRACTOR protects your cutting tool from loss and from falling down. Its core is the heavy-duty Kevlar cord that can be extended up to 90 cm. As soon as you let go of your knife, it is returned to you via the flexible cord. Your hands are free for other activities – the knife always remains at hand. The carabiner is designed for your belt loop, the Kevlar look at the other end fits through the eyelet of your cutting tool.

### USED BLADE CONTAINER

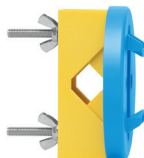
NO. 9810



You can fill the USED BLADE CONTAINER with the content of your SAFEBOX. Or directly with your used blades. When the box is full, turn the lid until it shuts. Now the box cannot be reopened. The next step is to safely and completely dispose of the filled USED BLADE CONTAINER as normal waste.

### WALL MOUNT BRACKET USED BLADE CONTAINER

NO. 9845



Include it in your order now! With this mounting bracket you can fix your USED BLADE CONTAINER to a central location. Use the clamp and screws and nuts supplied with the product to attach it to either a pipe or a rod.

### SAFEBOX

NO. 108000



The SAFEBOX is large enough to store a large number of used blades safely. And at the same time, it is compact enough to carry with you. The two slits are not only used for filling, but also to „shorten“ your snap-off blades. When your SAFEBOX is full, empty it into your USED BLADE CONTAINER.

---

## MANUFACTURER

MARTOR KG | Lindgesfeld 28 | 42653 Solingen | Germany  
T +49 212 73870-0 | info@martor.de | www.martor.com